

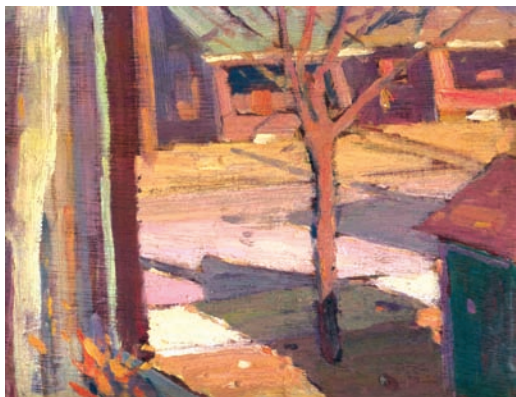
DEWITT DRAKE

Oil Sketches

Exhibition, September 2 to 28, 2006



[Gravel Works in Winter].
9" x 10 3/4". oil on board. [#267]



[From the Window on Winters Day].
8 3/4" x 10 1/2". oil on ply-wood panel. [#263]



[House in Sunlight].
8 1/2" x 10 1/2". oil on board. [#258]



[Barn in Winter].

8 1/2" x 10 1/2". oil on board. signed on recto. [#259].



[Red Farmhouse].

9" x 10 3/4". oil on board. signed on recto. [#268]

(Edgar, Frank) **Dewitt Drake [1884-c1979]** was born in Dunnville, Ontario, to a family of tradesmen. His Parents were very involved in the local Methodist Church (one sister became a missionary in Japan). In early life Drake traveled to northern Ontario, to Fort William (Thunder Bay), and New York State. In documents from the period Drake listed his occupation as "Printer". In 1914 he married his wife Edith, and in 1919 his daughter Stella was born. Drake resided in Toronto for most of his life but was later committed to Whitby Hospital because of illness. He worked for the Toronto Telegram for many years as a type-setter and illustrator (in 1963 he received a 50 year medal from Typographical Union 91). He had extensive contact with Toronto artists and was a friend of J.E.H. and Thoreau MacDonal. It is believed that Drake studied at the Ontario College of Art (Carmichael, JEH. MacDonal, & Beatty would have been teachers). He painted in Toronto, the greater area, and Southern Ontario. Some paintings and drawings bear exhibition labels from Ontario Society of Artists Exhibitions in 1920 and 1921. Dewitt Drake was an accomplished etcher and showed with the Canadian Painters-Etchers in 1957, 59, 60, and 62. His graphic work was influenced by Modernist trends of the twentieth century and his paintings by the Post-Impressionism of the Group of Seven.

D & E LAKE LTD. Fine Arts

1199 Yonge Street, Toronto, Canada, M4T 3A8

Tel. [416] 944-2324 Fax 944-2296 Toll free: 800-695-1052

e-mail: fineart@delake.com www.delake.com

Gallery Hours: Monday to Friday Noon to 6, [Thursday to 8],

Saturday 10 to 5, Sunday 3 to 6